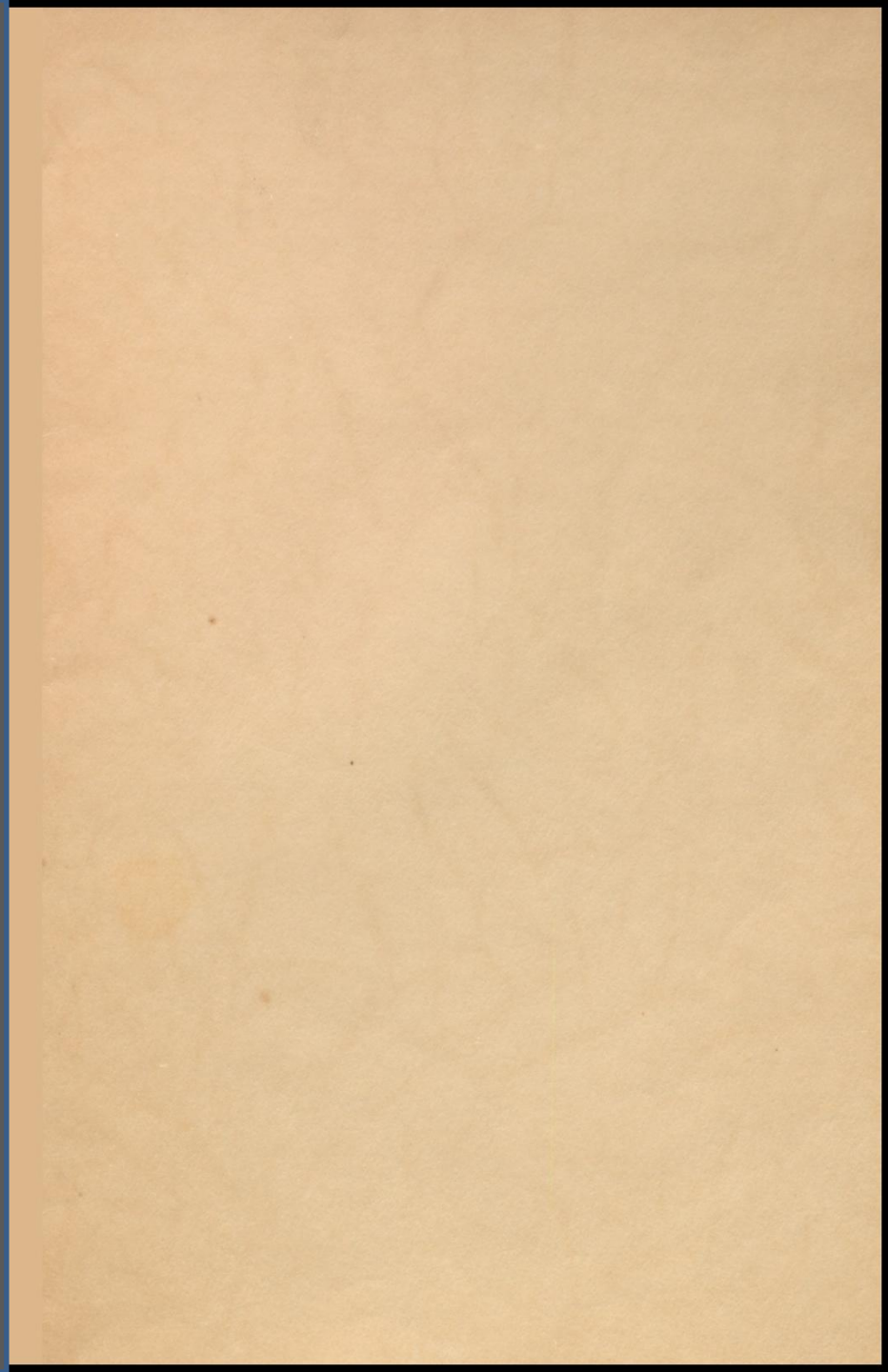


THE PANTHER
1940

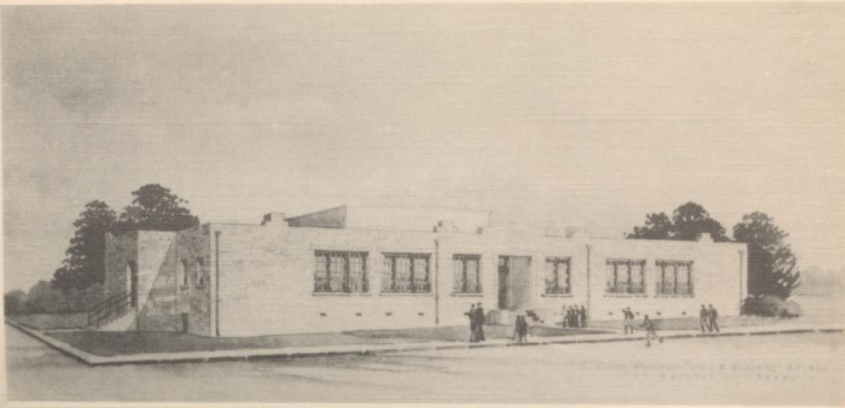


THE PANTHER

1940

BLANCO HIGH SCHOOL

BLANCO, TEXAS



NEW HIGH SCHOOL BUILDING

FOREWORD



We, the annual staff, in producing our first annual, sincerely hope that when you have moved into your new building you will adopt this annual as a tradition of the Blanco High School.

We have attempted to reproduce for you some of the happenings of our school year. In doing this, we hope we have covered the interests of every student and have made the ownership of this book a true pleasure.

ANNUAL STAFF.



TO SUPERINTENDENT S. P. COWAN, BECAUSE OF THE DEVELOPMENT OF THE SCHOOL UNDER HIS GUIDANCE, BECAUSE OF HIS FAIRNESS, HIS FRIENDLINESS, HIS CHEERFULNESS, AND THE EQUALITY WITH WHICH HE DEALS, WE, WITH TRUE RESPECT, DEDICATE "THE PANTHER" FOR 1940.

FACULTY



S.P. COWAN
SUPERINTENDENT



J.C. DAVIS, PRIN.
COMMERCIAL



LILLIAN RHODES
ENG. & SPAN.



W.P. NORVELL
VOCATIONAL AGA.



M.B. CURTIS
HISTORY & SCIENCE



THELMA COVINGTON
6th GRADE



ILA EARLY
4th & 5th GRADES



JANE BURCHAM
2ND & 3RD GRADES



MARGARET WARREN
1ST GRADE



OLD SCHOOL BUILDING



F.L. DODGEN



J.M. HARMON



A.J. WEBER



LEE WEST



H. MASSEY



MILTON YANCEY

S
C
H
O
O
L

B
O
A
R
D

SENIOR

CLASS



PRICE DODGEN
CLASS PRES.

CLASS PRESIDENT '39 '40
PRESIDENT OF F.F.A. '40
DEBATE '40, ONE-ACT PLAY '40
TENNIS '39 '40, TRACK '39 '40
BASKETBALL '39 '40, BAND
ANNUAL STAFF, SPANISH CLUB PRES. '39
SENIOR INTRAMURAL MANAGER



DORCAS BURLESON

YELL LEADER '40
TENNIS '39, GLEE CLUB
VOLLEYBALL '39
BASKETBALL '40

TRUMAN LINDEMAN

SCHOOL INTRAMURAL MANAGER
TENNIS '39 '40



LOLA FLUGRATH

SECRETARY TREASURER '40
GLEE CLUB, PEP SQUAD
ANNUAL STAFF, PAPER STAFF

ALTON JONES

BASKETBALL '37 '38 '39 '40
TRACK '39 '40
ONE-ACT PLAY '39



NORMA KIDDER

ART EDITOR OF ANNUAL
SPELLING, PEP SQUAD
GLEE CLUB, PAPER STAFF

MEDORA CRIST

F.F.A. SWEETHEART, WHO'S WHO
ANNUAL STAFF, EDITOR OF PAPER
DECLAMATION '40, ONE-ACT PLAY
GLEE CLUB, YELL LEADER



DOROTHY MCKEE

BASKETBALL '40, DEBATE,
ONE-ACT PLAY, EDITOR OF
ANNUAL, PAPER STAFF,
GLEE CLUB, WHO'S WHO,
VOLLEYBALL, SCHOOL INTRA-
MURAL MANAGER, PEP SQUAD.



T.D. SMYLIE

KING OF HIGH SCHOOL
TENNIS '39 '40
SPANISH CLUB

ALTA SMITH

GLEE CLUB
SPANISH CLUB

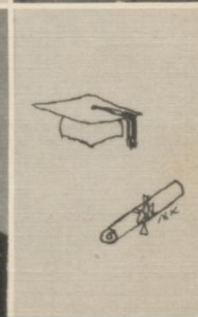


ANNA MAE WIER

ESSAY '40
TYPING, GLEE CLUB
SPANISH CLUB

LEONA WEST

GLEE CLUB
SPANISH CLUB



FOY WEST

BASKETBALL
CLASS PRES. '38

JUNIORS

WM. A. BYARS
CLASS PRES.



EGON ARTZT
LILLIAN BEAUCHAMP
FRANCES BLAIZE
MARY IVY BROWN
RACHEL BURLESON
THAVA CAMP
MARGIERY COX
HATTIE CROW
MADELINE CROW
MAGGIE MAE HERWIG
ILEEN JACOBS
CORRINE MUELLEN
LORRAINE PAGE
ROSABEL PEHL
HARRY ROBB
ERLENE TRAINER
CAROL WALLACE
WALTER WEBER
FRANK WEST
PAULINE WHEELIS
BONNIE LEE WIER

SOPHOMORES

BRIGHAM BARKER
CLASS PRES.



MARY M. DODGEN
MARY B. EDWARDS
JEWEL GOURLEY
LEROY JONAS
SYLVIA JONES
A.C. KNIBBE
LORINE KONZE
HELLEN LINNARTZ
THOS. MCKENZIE
SCOTT MCMURRY
CHESTER PEHL
ELVERA PEHL
CHARLIE PRICE
DOROTHY ROBB
BETTY ROBERTSON
ABNER LEE ROSS
KIT TEESDALE
TED TEESDALE
SALLY WALLACE
MILTON YANCEY, JR.

FRESHMEN

GLEN GREEBON, PRES.

BESSIE JOE BUCKNER

JEAN COX

DELLA MAE EDWARDS

HEMPLE LEE EDWARDS

SUE FUDGE

LEONA HORENBERGER

LEROY JOHNSON

DOROTHY LEEDERS

MURIEL LUXTON

MARL RATLIFF

LEROY SCHMIDT

N. R. SMITH

SCOTT SMITH

DORA LEE VECKLER

DOROTHY WAGNER



PRESENTING THE GRADE SCHOOL



BLANCO GIRL SC

THIS PLAQUE,
SHOWN BY DOROTHY
MY KEE AND TRUMAN
LINDEMAN, SCHOOL
INTRA-MURAL MAN-



AGERS, IS THE INTRA-
MURAL TROPHY
PRESENTED TO THE
SCHOOL BY MR. AND
MRS. CHAS. YANCEY.



JUST ONE MORE



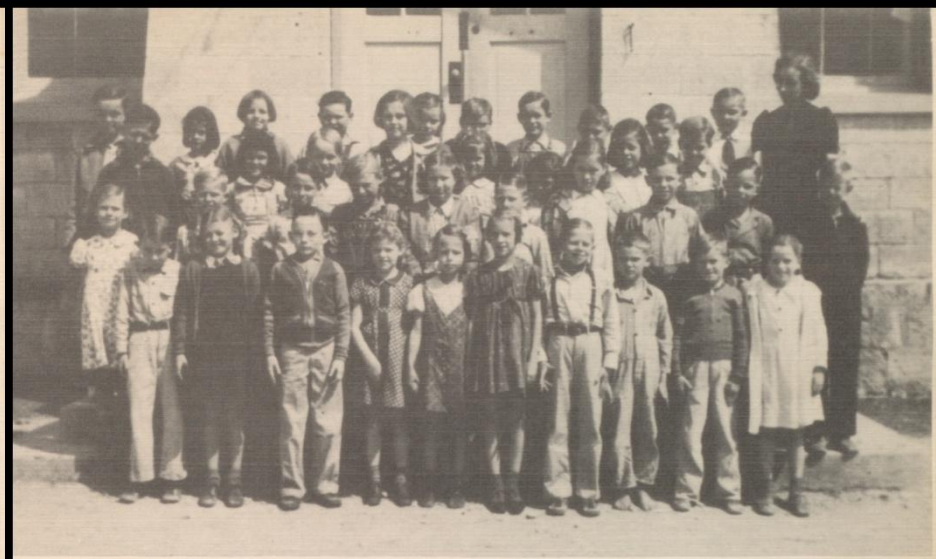
SEVENTH GRADE

BACK, MR. MILTON CURTIS, SPONSOR.
SECOND ROW, LEFT TO RIGHT: WEST, KONZE, KIDDER, BAGBY, LIES-
MAN, MASSEY, PROCHNOW. THIRD ROW: BLAIZE, ROBERTSON, SMITH,
YANCEY, CROSSLEY, BURLESON. FOURTH ROW: MCMURRAY, BEAUCHAMP,
NOWOTNY, NOWOTNY.



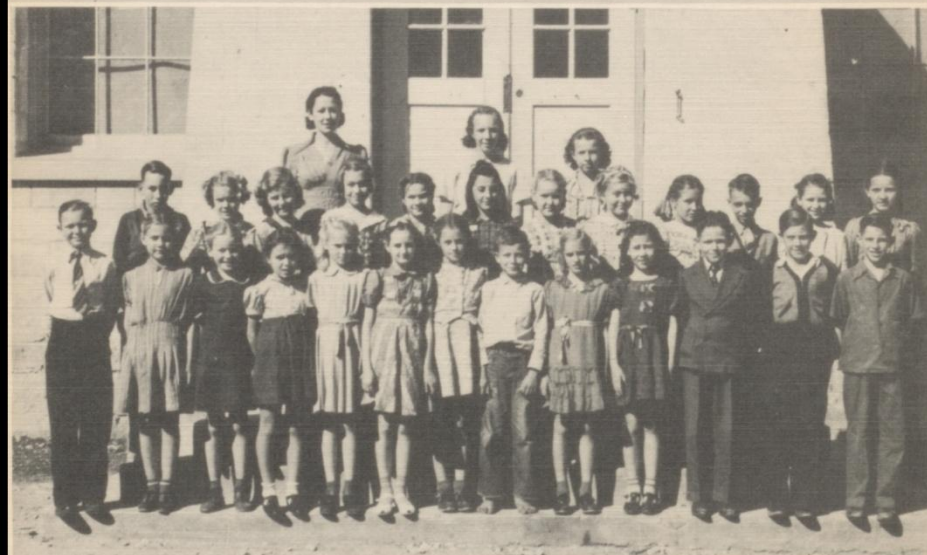
6th GRADE

BACK ROW, LEFT TO RIGHT: WEGNER, WAGNER, JACOBS, HILL, BROWN, WEST, MCFARLIN, SMITH, SMITH, NORVELL, REEVES, FINE, JOHNSON, EVANS, PIERSON, TRIESCH, BEAUCHAMP, WAGNER, ADAMS, SMITH, HOLENBERGER, HOWE, WALLACE, NOWOTNY, JONAS, DODGEN. MISS THELMA COVINGTON, TEACHER.



2ND AND 3RD GRADE

TRIESCH, CROSSLEY, KOCH, DOWDY, GLENN, JONES, SMITH, FINCH, REEVES, BECK, QUINLIN, BROWN, CONN, MCFARLIN, SCHOCH, MOORE, BLACKBURN, JACOBS, BLACKBURN, BEAUCHAMP, BURLESON, WAXLER, WAGNER, MADELY, WAGNER, WAGNER, LUXTON, JOHNSON, BECKMAN, WEST, HEARNE, GLENN, MADELY, MOSEL, KONZE, HOWE, WALLACE, SMITH. MISS JANE BERCHAM, TEACHER.



4th AND 5th GRADES

BACK ROW, LEFT TO RIGHT: TRIESCH, TRIESCH, HORNEY, TRIESCH, LINDEMAN, JONES, JONAS, SCHMIDT, REEVES, DAVIS, BLAIZE, SMITH, CROSSLEY, WEST, SCHOCH, EDWARDS, DODGEN, HOBRECH, WAGNER, HENSLEY, BURLESON, HOWSE, NOWOTNY, FINCH, BREFFON, WHEELIS, MCKEE. MISS ILA EARLY, TEACHER.



1ST GRADE

NEIL, DYER, BREWER, BROADBECK, DOWDY, TRIESCH, BERMEA, TRAINER, PARKS, GOURLEY, JOHNSON, BURLESON, BARRON, HERWIG, WAXLER, JOHNSON, WAGNER, HOBRECH, SCHOCH, SMITH, MCDONOUGH, HACKETT, CRAVATT, BEAUCHAMP, DYER, NORVELL, SCHMIDT, HOWSE. MISS MARGARET WARREN, TEACHER.



PERSONALITIES

MOST BEAUTIFUL
GIRL -

DOROTHY WAGNER

MOST HANDSOME
BOY -

EGON ARTZT

BEST ALL-AROUND
GIRL -

DOTTY McKEE

BEST ALL-AROUND
BOY -

PRICE DODGEN



MOST POPULAR
GIRL -

MEDORA CRIST

MOST POPULAR
BOY -

FOY WEST



MOST CLEVER
GIRL -

MARY M. DODGEN

MOST CLEVER
BOY -

TRUMAN LINDEMAN

MEDORA
CRIST



FFA
SWEET-
HEART
AND
WHO'S WHO
IN TEXAS

FFA



BOY

THIS IS THE PIG, A DUROC JERSEY, EXHIBITED BY EGON ARTZT, AT THE 1940 FAT STOCK SHOW IN SAN ANTONIO, TEXAS.

IT WAS SOLD TO THE HOMOND FOOD STORES FOR A TOP PRICE OF FIFTY CENTS A POUND.



THE BLANCO HIGH SCHOOL FAVORITES, INCLUDING DOROTHY MCKEE (SECOND FROM RIGHT), WHO, IN ADDITION TO BEING THE BEST ALL-AROUND GIRL STUDENT, IS NAMED IN WHO'S WHO IN TEXAS.



STANDING, LEFT TO RIGHT: MR. W.P. NORVELL, ADVISOR, EDWARDS, SCHMIDT, MEDORA CRIST, SWEETHEART, WEBER, JOHNSON, ARMKE, DODGEN, BROWN, LUXTON, YANCEY, ARTZT, JACOBS, JOHNSON, PEHL, SMITH, KNEBBE, TEASDALE, SMITH, WALLACE, WEST, ROSS, EDWARDS, SUPERINTENDENT S. P. COWAN.

SITTING, LEFT TO RIGHT: BLACKBURN, SMITH, HOHENBERGER, JONAS, PRICE, WEST, TEASDALE, MCMURRAY.

THE OFFICERS ARE AS FOLLOWS: MR. W.P. NORVELL, ADVISOR, PRICE DODGEN, PRESIDENT, MILTON YANCEY, VICE-PRESIDENT, WALTER WEBER, SECRETARY, FOY WEST, TREASURER, CHARLIE F. PRICE, REPORTER, RALPH EDWARDS, FARM WATCHDOG.



THE ANNUAL STAFF

LEFT TO RIGHT: MEDORA CRIST, ASSISTANT EDITOR, S.P. COWAN, SPONSOR, PRICE DODGEN, CIRCULATION MANAGER, LOLA FLUGRATH, ADVERTISING MANAGER, ANNA MAE WIER, SECRETARY, NORMA KIDDER, ART EDITOR, DOROTHY MCKEE, EDITOR-IN-CHIEF.



SPANISH CLUB

BACK ROW, LEFT TO RIGHT: CAMP, YANCEY, BYARS, JONES, SMYLIE, PEHL, MISS RHODES, HERWIG, HERWIG, BURLESON, PEHL, MCKENZIE, CROW, ARTZT, BARKER, WHEELIS, GOURLEY, LINNARTZ, EDWARDS, CROW, JOCOBS, LINDEMAN, MUELLER, MCMURRAY, TEESDALE, PAGE, TRAINER, WALLACE, BLAIZE, PEHL, TEESDALE, DODGEN, ROBERTSON, KONZE, COX, WIER, BROWN, WEBER.



THE PAPER STAFF

LEFT TO RIGHT: MEDORA CRIST, EDITOR-IN-CHIEF, FRANCIS BLAIZE, SOCIAL EDITOR, LOLA FLUGRATH, ART EDITOR, MISS EARLY, GRADE SCHOOL SPONSOR, BESSIE JOE BUCKNER, ADVERTISING MANAGER, BRIGHAM BARKER, SPORT EDITOR, MR. DAVIS, SPONSOR, ANNA MAE WIER, FEATURE EDITOR, DOROTHY MCKEE, MANAGING EDITOR.



GLEE CLUB

BACK ROW: MISS RHODES, MUELLER, PAGE, BLAIZE, LUXTON, UECKER, HOHENBERGER, CAMP, CROW, BURLESON, JONES, CRIST, TRAINER, WEST, SMITH, FLUGRATH, DODGEN, WALLACE, WIER, BURLESON, WHEELIS, ROBERTSON, WIER, BUCKNER, WAGNER, MCKEE.



HIGH SCHOOL LITERARY CLUB

BACK ROW: JONES, CROW, BARKER, MCKENZIE, ROBB, BYARS, CRIST, DODGEN. FRONT ROW: FUDGE, UECKER, CROW, WIER, ROBERTSON, WALLACE, WIER, BUCKNER, MCKEE.



GRADE SCHOOL LITERARY CLUB

BACK ROW: KIDDER, REEVES, DAVIS, NORVELL, WHEELIS, BURLERSON. FRONT ROW: LIESMAN, TRIESCH, HEARNE, BURLERSON, SMITH, SMITH.



BAND

STANDING, LEFT TO RIGHT: SMYLIE, PAGE, BROWN, BARKER, DODGEN, HOHENBERGER, CROSSLEY, TRIESCH, TEESDALE, KONZE, BUCKNER, MR. AND MRS. EBERHARDT, INSTRUCTORS. SITTING, LEFT TO RIGHT: BUCKNER, BECK, MRS. RUTH BYARS, TRIESCH, SMITH, KONZE, FLUGRATH, HARMON, BYARS.



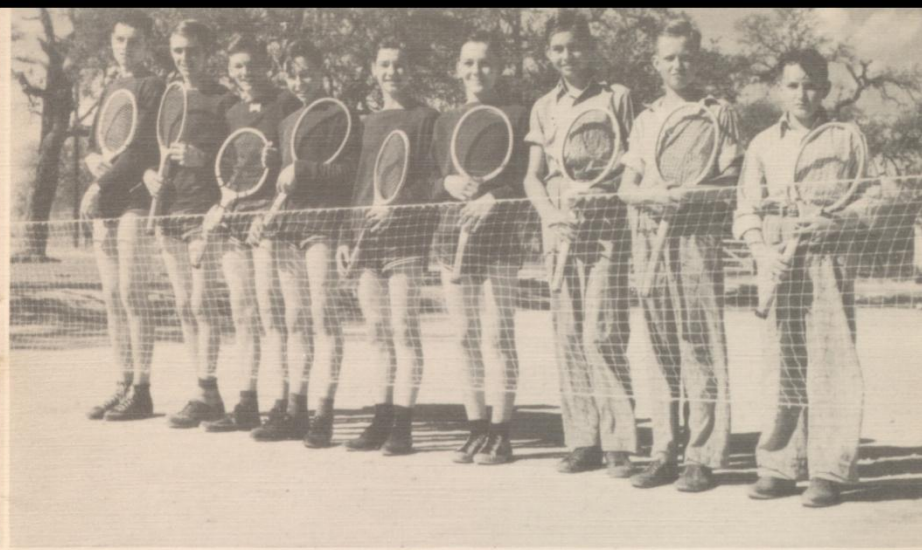
PEP SQUAD

BACK ROW, LEFT TO RIGHT: WALLACE, BLAIZE, MUELLER, TRAINER, PAGE, LINNARTZ, MCKEE, BURLERSON. SECOND ROW, LEFT TO RIGHT: WIER, WHEELIS, KONZE, CAMP, JONES, KIDDER, BUCKNER, FLUGRATH, WIER. YELL LEADERS: DORCAS BURLERSON, MEDORA CRIST.



BASKETBALL TEAM

BACK ROW: COACH CURTIS, LUXTON, SCHMIDT, GREEBON, SMITH, WEST, JONAS YANCEY, WEST, DODGEN, ROBB, BYARS, ARTZT.



TENNIS CLUB

LEFT TO RIGHT: BYARS, SENIOR DOUBLES, LINDEMAN, SENIOR SINGLES, DODGEN, SENIOR DOUBLES, PRICE AND JONAS, JUNIOR DOUBLES, GREEBON, JUNIOR SINGLES, CROSSLEY, GRADE SCHOOL DOUBLES, YANCEY, GRADE SCHOOL SINGLES, NORVELL, GRADE SCHOOL DOUBLES.



BASKETBALL TEAM

BACK ROW: BURLERSON, JONES, ROBB, LIESMAN, LUXTON, DODGEN, COACH COWAN, KONZE, WHEELIS, BUCKNER, WAGNER, BROWN, MCKEE.



TENNIS CLUB

LEFT TO RIGHT: FINE, GRADE SCHOOL DOUBLES, KONZE, GRADE SCHOOL SINGLES, KIDDER, GRADE SCHOOL DOUBLES, BUCKNER, JUNIOR SINGLES, WHEELIS, SENIOR SINGLES, DODGEN AND ROBB, SENIOR DOUBLES, LUXTON AND HOHENBERGER, JUNIOR DOUBLES.



TRACK TEAM

BACK ROW: RATLIFF, LUXTON, GREEBON, ARTZT, JONES, FRONT ROW:
DODGEN, YANCEY, BYARS, PRICE, JONAS.

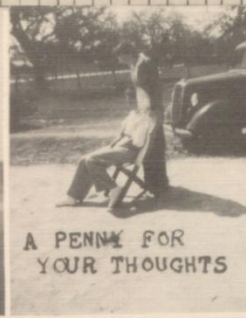


VOLLEY BALL TEAM

STANDING, LEFT TO RIGHT: LINNARTZ, BURLESON, HERWIG, BROWN,
JACOBS, JONES, BEAUCHAMP, MCFARLIN, COACH EARLY, SITTING, DODGEN,
KONZE.



GOING MY WAY?



A PENNY FOR
YOUR THOUGHTS



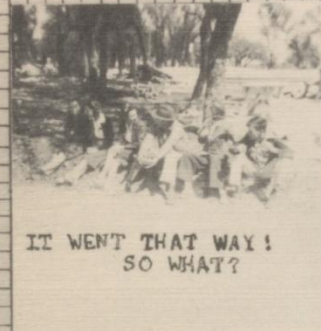
Now
HOWDY



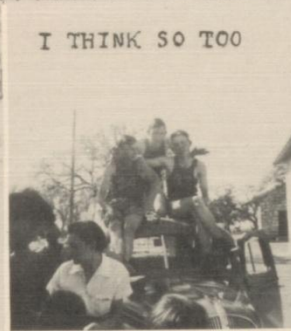
THESE HITCH-HIKERS



HERE THEY ARE, GIRLS



IT WENT THAT WAY!
SO WHAT?



I THINK SO TOO



JUST ONE MORE JUMP



MAYBE
AND...

COMPLIMENTS

OF

H. DITTLINGER ROLLER MILLS

FLOUR MEAL FEED

NEW BRAUNFELS TEXAS

COMPLIMENTS

EIBAND & FISHER

NEW BRAUNFELS TEXAS

COMPLIMENTS OF
CHAS. E. CRIST

HARDWARE, LUMBER, GRAIN, WOOL, AND MOHAIR
EVERYTHING ELECTRICAL
YOUR BUSINESS APPRECIATED

BLANCO

TEXAS

NEW BRAUNFELS COCA COLA
BOTTLING CO., INC.

NEW BRAUNFELS

TEXAS

COMPLIMENTS OF-

THE BLANCO NATIONAL BANK

- MEMBER FDIC

COMPLIMENTS

KRUEGER MOTOR CO.

CHEVROLET - BUICK - PONTIAC - OLDS

R. E. STUBBS -
BLANCO DEALER

MOUNTAIN TOP

SKATING
DANCING
COLD DRINKS

O. R. GUNN, PROP.

JOHNSON CITY

TEXAS

GERLICH AUTO CO.

FORD SALES AND SERVICE

USED CARS
'PHONE 61

NEW BRAUNFELS

TEXAS



DIAMONDS WATCHES
F.C. HOFFMAN
JEWELER
SILVERWARE REPAIRS
NEW BRAUNFELS TEXAS

COMPLIMENTS
W.W. KRUEGER
GENERAL MERCHANDISE
TWIN SISTERS
TEXAS

100% COMPLETE TO SERVE 100%
SHOP HERE AND SAVE
NATIONAL 5¢ TO \$1.00 STORES
NEW BRAUNFELS

KONZE CAFE MARKET
L.J. KONZE, PROP.
BLANCO 'PHONE 50

BUY WHERE YOU CAN GET IT SERVICED
FRIGIDAIRE - PHILCO - MAYTAG
18 YEARS' EXPERIENCE
H. KLAPPENBACH
JOHNSON CITY TEXAS

COMPLIMENTS
FARRIS GROCERY
BLANCO TEXAS

G.E. GREEBON WAYNE SMITH
ROCK GARAGE
'PHONE 89
"WHERE SERVICE IS PARAMOUNT"
BLANCO

COMPLIMENTS
FULCHER DRUGS
PRESCRIPTIONS CAREFULLY COMPOUNDED
ELECTRICAL APPLIANCES
BLANCO TEXAS

EDNA'S BEAUTY SALON
FOR LASTING PERMANENTS - CORRECT HAIR STYLING
LICENSED BARBER
NEW BRAUNFELS TEXAS

TEXAS THEATRE
SHOWS ON FRIDAY, SATURDAY,
SUNDAY, AND MONDAY
JOHNSON CITY

COMPLIMENTS OF
YOUR ANNUAL PHOTOGRAPHER
MODERN PHOTOGRAPHERS
SAN MARCOS TEXAS

WHEN YOU'VE TRIED THE BEST - THEN TRY THE BEST -
SHORTY'S CAFE
HOT BARBECUE SANDWICHES COLD DRINKS
BLANCO, TEXAS

J. FRANK KENDALL
TWO CONVENIENT STORES
BLANCO JOHNSON CITY
COMPLETE LINE OF SCHOOL SUPPLIES

EDX BROS. MOTOR CO.
AUTHORIZED SALES AND SERVICE
FORDS, MERCURYS, TRACTORS
JOHNSON CITY TEXAS

YANCEY-SERVICE-STATION
MAGNOLIA PRODUCTS
WASHING LUBRICATION BATTERY SERVICE
BLANCO

COMPLIMENTS OF
NEW BRAUNFELS NURSERY & FLORAL CO., INC.
NEXT TO LANDA PARK
NEW BRAUNFELS TEXAS

COMPLIMENTS OF
HARRY A. KNIBBE
GENERAL MERCHANDISE

H. A. DIETEL

DISTRIBUTOR - BLATZ, PEARL BEER

PHONE 54

NEW BRAUNFELS

SPRING BRANCH TEXAS

COMPLIMENTS OF
C. J. LUDWIG FURNITURE STORE

NEW BRAUNFELS

TEXAS

COMPLIMENTS OF —
—RED & WHITE STORE

PHONE 27

BLANCO

R. BINDSEIL, PROP.

SINCLAIR SERVICE STATION

FRANK PRICE, PROP.

BLANCO

TEXAS

COMPLIMENTS

LOCKE NURSERY

NEW BRAUNFELS

TEXAS

THE BLANCO THEATRE

\$35,000 SHOW PLACE

ACOUSTICALLY PERFECT

AIR CONDITIONED

ALL SEATS CUSHIONED

"THE CREAM OF ENTERTAINMENT"



